



ERN Coolant nut with SXC coolant cap

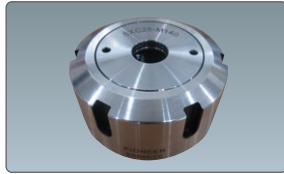
Front threaded seal for air, coolant or keeping chips & swarf from entering the front of the collet.

Features

- O-ring seal for pressure up to 10.3 MPa
- Prevent chips, dust & swarf from entering holders
- Jet Blast for non-coolant cutting tools available upon request



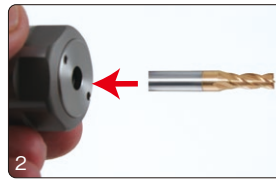
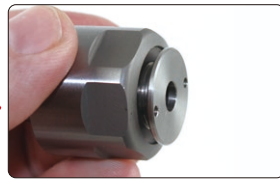
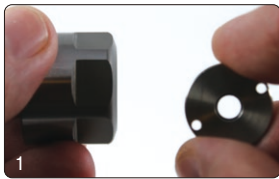
ERN Coolant nut



ERN Coolant nut with SXC Coolant cap

Code No.	description	SXC coolant cap to use
ERN11H-CC	ER11 Hex coolant nut	SXC06-ID size
ERN16-CC	ER16 Hex coolant nut	SXC10-ID size
ERN20-CC	ER20 Hex coolant nut	SXC16-ID size
ERN25-CC	ER25 E type coolant nut	SXC16-ID size
ERN32-CC	ER32 E type coolant nut	SXC25-ID side
ERN40-CC	ER40 E type coolant nut	SXC25-ID size

How to assemble



1. Thread coolant cap into ERN-CC nut, tighten with wrench after the collet has been assembled.
2. Insert a cutting tool. Shank of the cutting tool is engaged with O-ring.

SXC coolant cap

*Please refer to the chart for SXC coolant caps on page 26 when ordering.

Accessories for ER collet chuck

Parts



ER	Nut	Nut description	Adjust screw	Wrench	Wrench type
11	ERN11H	ER11 Hex nut	ASC-ER11	ERW-11 HEX	Hex type
	ERN11M	ER11 Mini nut		ERW-11 M	Mini E type
16	ERN16	ER16 nut E type	ASC-ER16	ERW-16 E	E type
	ERN16M	ER16 Mini nut		ERW-16 M	Mini E type
20	ERN20	ER20 nut E type	ASC-ER20	ERW-20 E	E type
25	ERN25	ER25 nut E type	ASC-ER25	ERW-25 E	E type
32	ERN32	ER32 nut E type	ASC-ER32	ERW-32 E	E type
40	ERN40	ER40 nut E type	ASC-ER40	ERW-40 E	E type

HSK Coolant tube

- For HSK A type
- Double seal design



Tube	Tube description	Wrench
TUBE-063A	HSK 63A Coolant Tube	WRENCH HSK 63A COOLANT TUBE
TEBE-100A	HSK100A Coolant Tube	WRENCH HSK100A COOLANT TUBE