



❖ JNC series



- Available in 140, 170, 200 & 250mm.
- Strong clamping - 1.7 times more.
- Accurate Indexing.
- High durability.
- Water Protection structure - Auto-Air Purging System (PAT.)

❖ JNCH series



- High - speed Indexing - Twice the indexing speed of JNC.
- Available in 140, 170, 200 & 250mm.
- Accurate Indexing.
- High durability.
- Water Protection structure - Auto-Air Purging System (PAT.)
- Interchangeable with JNC - Same Chuck Flanges & Tailstock for JNC.

❖ YNC series



- Available in 170, 200 & 250mm.
- Rigid Bearing Structure - Table shaft supported by 2 large bearings.
- High Clamping Torque - Air hydraulic mechanism standard.
- High Indexing Accuracy - YNC250 within 20sec.
- Water Protection structure - Auto-Air Purging System (PAT.)

❖ YNCP series



- Highest Clamping Torque in this class.
- Available in 170, 200 & 250mm.
- Rigid Bearing Structure - Table shaft supported by 2 large bearings.
- High Indexing Accuracy - YNCP250 within 20sec.
- Water Protection structure - Auto-Air Purging System (PAT.)



❖ TNT series - Tilting rotary tables



- Available in 100, 170 & 250mm.
- Compact size suitable for small size M/C.
- Fixed cables.
- High speed indexing at 41.6min⁻¹ in rotating axis (TNT100/170).
- Water Protection structure - Auto-Air Purging System (PAT.)

❖ TNT130-M2 - Multi spindle tables



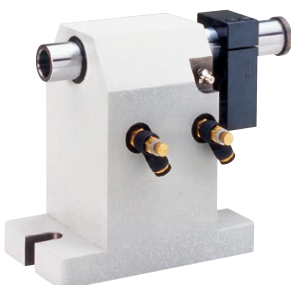
- For High Productivity - Simultaneous machining of two 5-face work pieces.
- Compact body for application to a smaller M/C.
- Water Protection structure - Auto-Air Purging System (PAT.)

❖ Controller - AC5/AC3 series



- Compact, Low cost.
- 100 programs×100 steps.
- M signal mode - 100 programs / Binary mode - 16 programs.
- Closed structure for protection against oil mist.
- Showing the state with signal for maintenance in the panel.
- RS232C ready.

❖ Accessories



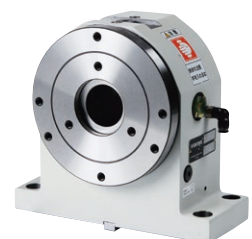
TPA/TPB series
Pneumatic type Tail Stock



TSA/TSB series
Manual type Tail Stock



SS series
Side Spindle



ST series
Side Table