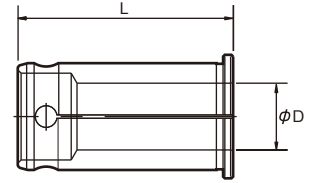




Straight collet for Milling Chuck

MC straight collet



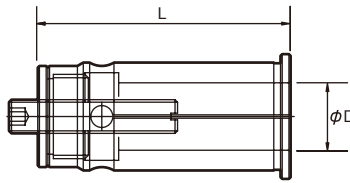
standard φD ◆	MC20	MC25	MC32	MC42
6.0	MC20-M060	MC25-M060	MC32-M060	
8.0	MC20-M080	MC25-M080	MC32-M080	
10.0	MC20-M100	MC25-M100	MC32-M100	
12.0	MC20-M120	MC25-M120	MC32-M120	
16.0	MC20-M160	MC25-M160	MC32-M160	MC42-M160 *
20.0		MC25-M200	MC32-M200	MC42-M200 *
25.0			MC32-M250	MC42-M250 *
32.0				MC42-M320 *

STYLE	L
MC20	53
MC25	61.5
MC32	64.5
MC42	78

*Not regular stock items. Please check for availability.

◆Collets in odd size 1mm ID increment available from stock, or subject to delivery confirmation.

NC height adjustable straight collet



standard φD ◆	NC20	NC32
6.0	NC20-M060	NC32-M060
8.0	NC20-M080	NC32-M080
10.0	NC20-M100	NC32-M100
12.0	NC20-M120	NC32-M120
16.0	NC20-M160	NC32-M160
20.0		NC32-M200
25.0		NC32-M250

STYLE	L
NC20	60
NC32	72

◆Collets in odd size 1mm ID increment available from stock, or subject to delivery confirmation.

How to use

How to use MC

1. Clean up the I.D. of the MC, I.D. and O.D. of the collet and the cutter shank.
2. Insert the collet or the cutter shank in the I.D. of the MC.
3. Tighten the nut using MCW wrench. Tighten the nut all the way down until the O-ring located at the bottom of the nut kisses the flange of the body.
4. Do not tighten the nut after O-ring kisses the flange.

