



Parts for ER Collet chuck

Accessories

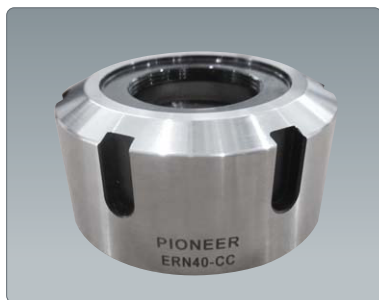
Parts

ER	Nut	Nut description	Adjust screw	Wrench	Wrench type
11	ERN11H	ER11Hex nut	ASC-ER11	ERW-11H	Hex type
	ERN11M	ER11 Mini nut		ERW-11M	Mini E type
16	ERN16	ER16 nut E type	ASC-ER16	ERW-16E	E type
	ERN16H	ER16 Hex nut		ERW-16H	Hex type
	ERN16M	ER16 Mini nut		ERW-16M	Mini E type
20	ERN20	ER20 nut E type	ASC-ER20	ERW-20E	E type
25	ERN25	ER25 nut E type	ASC-ER25	ERW-25E	E type
32	ERN32	ER32 nut E type	ASC-ER32	ERW-32E	E type
40	ERN40	ER40 nut E type	ASC-ER40	ERW-40E	E type

Front threaded seal for air, coolant or keeping chips & swarf from entering the front of the collet.

Features

- O-ring seal for pressure up to 10.3 Mpa
- Prevent chips, dust & swarf from entering holders
- Jet Blast for non-coolant cutting tools available upon request



ER coolant nut



ER coolant nut w / SXC coolant cap

Code No.	description	SXC coolant cap to use
ERN11-CC	ER11 Hex coolant nut	SXC06-ID
ERN16-CC	ER16 Hex coolant nut	SXC10-ID
ERN20-CC	ER20 Hex coolant nut	SXC16-ID
ERN25-CC	ER25 E type coolant nut	SXC16-ID
ERN32-CC	ER32 E type coolant nut	SXC25-ID
ERN40-CC	ER40 E type coolant nut	SXC25-ID

* Please refer to "how to assemble" instruction on page.Parts for SX Super chuck.

* Please refer to the chart for SXC coolant caps on page.Parts for SX Super chuck when ordering.